

Enhanced vision benefits for ADT members

XP Health makes it easy to care for your vision needs, all while saving time and money. Choose from selection of 500+ frames with \$0 copay.

THE XP HEALTH DIFFERENCE



For everyone

Even people with 20/20 vision can use the benefit



Affordable

\$0 copay on 500+ frames

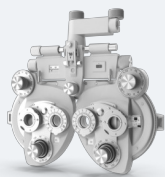


Convenient

Virtual and home try-on and personalized style recommendations

EYE EXAMS AND EYEWEAR

VISION CARE



\$0 copay

Comprehensive annual eye exam¹

Online prescription renewal

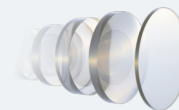
EYEWEAR

Frames



Selection of 1500+ frames to choose from

Lenses



Doctor-recommended lenses² at no cost to you

LENSES INCLUDE:

· UV protection · Advanced anti-glare protection · Durable polycarbonate material · Dust, smudge, water, and scratch resistance ·

OR



Contact lenses³



Questions? Email us at concierge@xphealth.co or chat with us at xphealth.co

¹ Your exam is provided by National Vision Administrators with over 99,000 vision care access points.

² High-index lenses, progressives/multifocals, light-responsive, polarized sunglasses, and custom tinted lenses have additional costs.

³ \$180 credit on an annual supply. Individual packs are discounted at a prorated amount based off an annual supply.

Summary of Benefits

Benefit coverage		Member benefit
Benefit period Benefit and coverages renew on this cadence		Exams and materials every calendar year
XP Health vision care platform		
In-office comprehensive vision exams Eye health assessment, refractive tests, and dilation when necessary		In-network: \$0 copay exam at 99,000 vision care access points. Your exam is provided by National Vision Administrators L.L.C.* Out-of network: Up to \$35 reimbursement
Online prescription renewals		\$0 copay
XP Health Marketplace		
Technology-driven convenience and personalization Digital face scan, personalized frame recommendations based on fit and style, and virtual and home try-on		\$0 copay
Prescription frames discount		500+ frames with \$0 copay or 1,000+ frames at direct-from-warehouse pricing in XP Health marketplace and 35% off retail for in-office purchases*
Non-prescription frames discount		500+ frames with \$0 copay or 1,000+ frames at direct-from-warehouse pricing in XP Health marketplace and 35% off retail for in-office purchases*
Contact lens purchase		\$180 off retail
Lenses		
All eyewear purchases in the XP Health marketplace includes these doctor-recommended lens features. Other add-ons, like multifocal, light-responsive lenses and others have additional costs that are listed in the platform and subject to change.		
Advanced anti-reflective coating		\$0 copay
Advanced blue light protection		\$0 copay
Durable polycarbonate material		\$0 copay
Dust, smudge, and water resistance		\$0 copay
Scratch resistance coating		\$0 copay
Additional benefits and discounts		
Refractive surgery Members receive \$1,200 off at preferred providers – LasikPlus, TLC, and The LASIK Vision Institute. All other in-network providers extend 15% off standard prices or 5% off promotional prices. This benefit is provided by National Vision Administrators L.L.C.		