

Welcome to TrueScripts







Putnam County School Consortium

Prescription Benefits Guide
PPO

Welcome to TrueScripts!

TrueScripts Management Services is partnering with your employer to assist with your prescription and pharmacy benefits. We are committed to:

-  Helping you save money while providing convenient access to your prescription medications
-  Promoting the use of safe, economical, and clinically appropriate medications
-  Providing a personal and educational approach that will maximize the effectiveness of your benefits plan
-  Always delivering **Amazing Care!** Just give us a call - With over a 95% success rate, our **One Ring Response** will have you speaking with a live TrueScripts professional on the very first ring of the phone.

Our team is readily available
Monday – Friday from 8AM – 6PM (EST)

Give us a call
1-844-257-1955

or

Visit Our Website
www.truescripts.com

This guide, along with the TrueScripts Member Portal and Member Care team, is a key resource. We encourage you to review and reach out as needed to educate yourself on your prescription benefits plan.

Understanding how your plan works will help you get the most out of your benefits.



For 24/7 access to your prescription benefits information and helpful resources, be sure to register with the [TrueScripts Member Portal](#).

Follow Us!



www.facebook.com/TrueScripts



www.twitter.com/TrueScriptsPBM



www.linkedin.com/company/TrueScripts

Putnam County School Consortium

Prescription Benefits At-A-Glance: PPO

Co-Pay Structure

Drug Type	1 - 30 Day Supply	31 - 90 Day Supply
Generic	\$15	\$30
Preferred Brand	\$40	\$80
Non-Preferred Brand	\$60	\$120
Specialty	\$60	Not Available

Pharmacy Network

Retail Pharmacy
Open Network

KEEPING YOU CONNECTED

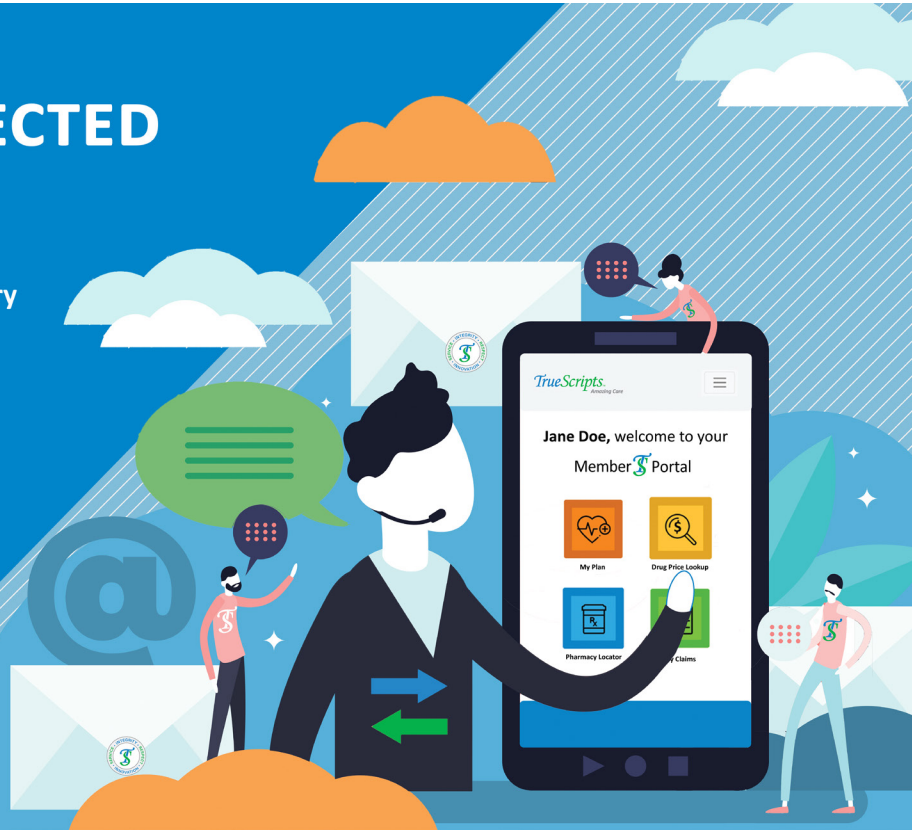
Member Portal

- Your Personal Plan Information & Claims History
- Real-Time Drug Price Lookup
- Pharmacy Locator
- Other Member Forms & Resources
- 24 Hours a Day, 7 Days a Week



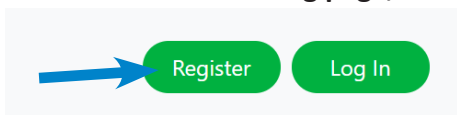
Scan above
or
Enter below

memberportal.truescripts.com **Get Started!**



TrueScripts Members, follow these instructions to register:

- Enter the URL above into your web browser to or click “Get Started” if viewing this document electronically. You can also scan the QR code from your mobile device to begin the registration process.
- On the Member Portal landing page, choose ‘Register’ from the top navigation bar.



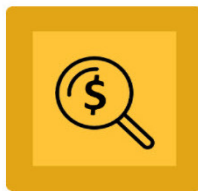
- Enter your personal information to complete the registration process.
**Note that you will need to have your Member ID card readily available*
- Check your email to verify and complete your account set-up.
- Once inside the portal, quickly access important information and helpful resources from your Member Dashboard. The Drug Price Lookup and Pharmacy Locator tools will help you find the pharmacies nearest you with the best pricing for your medications.



My Plan



My Claims



Drug Price Lookup



Pharmacy Locator

**If you have any questions along the way, please call us at the number below.
Our team is prepared to provide you with *Amazing Care!***

TrueScripts[™]
Amazing Care

We are Experts in Prescription Benefits.

Questions? Please call and speak to a care specialist who will answer your questions. **844-257-1955**

Mail Order Member Education

Members may choose to receive prescription medications via mail order pharmacy. This alternative to retail pharmacy is completely optional. Should you wish to enroll in mail order, please follow the steps below, and note that there will be no changes in your plan setup:

1. Select the Mail Order Pharmacy on the provided flyer that you would like to use for your prescriptions. Once you have selected the pharmacy, you will need to contact that pharmacy to set up an account with them. You can complete this step in one of the following methods:
 - a. Set up a profile on their website.
 - b. Call their customer service number
2. Have a list of the medications and prescribing doctors ready to input when asked.
3. Provide the pharmacy with your TrueScripts Processing information:
 - a. RxBin: 017274
 - b. RxPCN: PDMI
 - c. RxGroup: 99993996
 - d. Your Member ID number printed on your card
4. If you have current refills at another pharmacy, you can request that the mail order pharmacy call and request that they be transferred over to your new pharmacy.
5. A new prescription may be needed from your healthcare provider for 90-day fills at the retail pharmacy or mail order. The pharmacy can reach out to your provider to request this script. Since your provider should be able to call this into your pharmacy of choice, an office visit typically will not be required.
6. If the pharmacy informs you that your insurance is not contracted with TrueScripts, please request for them to call us so that we may further assist.

Mail Order Pharmacy Network

To enroll in mail order, please visit a website below:



343 Mercer Road
Greenville, PA 16125
PHONE: 844-522-CARE (2273) FAX: 844-308-1485
E-Scribe: NCPDP 6005943
carefillltc.com

***See note below**



7835 Freedom Ave NW
North Canton, OH 44720
PHONE: 1-866-909-5170 FAX: 1-866-909-5171
E-Scribe: NCPDP 3677361
envisionpharmacies.com/Mail/Patients



by pharmacy
250 Commercial Street, Suite 2012
Manchester, NH 03101
PHONE: 1-866-332-1668 FAX: 603-935-9108
E-Scribe: NCPDP 3061582
pillpack.com

***Dispenses 30-day supply only**



P.O. Box 2718
Portland, OR 97208
PHONE: 1-800-552-6694 FAX: 1-800-723-9023
NABP 3812674 – NPI 1528003910
ppsr.com

**Care-Fill mail order services are only available in the following states: AK, AZ, CO, CT, DC, DE, FL, GA, HI, ID, IL, IN, IA, KY, MI, MA, MO, MT, NJ, NM, NY, NC, ND, OH, PA, RI, SC, SD, VT, VA, WA, WI, WY.*

Maximize Your Savings

By Considering These Best Practices

90 Day Supply / Retail Pharmacy: To help cut costs and increase convenience to **you**, TrueScripts allows 90-day prescriptions to be filled at retail pharmacies nationwide. To obtain a 90-day prescription, have your prescribing provider call into your pharmacy of choice with the updated prescription; an office visit is typically not required.

Generic Medications: Generic medications provide quality, cost-effective alternatives to brand medications. Generic equivalents work the same way in the body and have the same ingredients, strength, dosage, and form as their brand-name counterparts. Unless otherwise directed by your doctor, it is a good idea to use generic equivalents when possible.

Over-the-Counter (OTC) Products: Some brand-name prescription drugs have OTC alternatives that are therapeutically identical and are likely a much lower cost option for treating your condition. When talking to your prescriber, ask if an OTC product is available. TrueScripts will also do our part to identify situations where OTC coverage will benefit both you and your health plan.

Coupons & Copay Cards: Several websites, such as goodrx.com, offer large databases of savings opportunities. Please have your pharmacy check pricing through all sources before checking out. If any of those sources provide greater savings, please select that option and submit your receipt(s) via the Electronic Drug Reimbursement form found at www.truescripts.com/members. The amount paid will be applied to your deductible and/or out of pocket, based upon plan structure.

Manufacturer websites also list additional copay assistance programs on their websites. Keep in mind that only copay cards can be used *in addition to* your TrueScripts coverage.

Shop Around: Drug prices can vary significantly by pharmacy location. Use our Drug Price Lookup tool to compare drug prices at more than 70,000 pharmacies nationwide. Please note that prices are subject to change without notice at any time.

Take Medications as Directed: Not taking your medication as directed by your doctor can lead to health complications. This includes missing doses, ending prescribed medicines early, or not taking them at all. If you are unable to afford your medication, please speak freely with your physician to discuss other options.



Commonly Asked Questions

Who is covered under my prescription benefits?

This benefit plan covers you, your eligible spouse, and eligible children through age 26. Permanently disabled children may be eligible for some benefits after the age of 26, if they meet the requirements for continued coverage.

What does my prescription benefit plan cover? What is not covered?

Your plan covers charges for eligible drugs prescribed by a physician and dispensed by a pharmacist. Please view the Summary Plan Description for covered expenses and limitations.

Do I need my Benefit ID card to get a prescription filled?

Yes, we suggest carrying your insurance ID card at all times. Please note that you and each participating member of your family will be receiving new ID cards with the TrueScripts information on the back. It is extremely important that you use this new ID card for all prescription and medical services, beginning 1/1/2021. If you do not have your card with you and need to fill a prescription, your pharmacy may contact us at (844) 257-1955 for all of the information they will need to process your prescription. To request additional ID cards, please contact your health insurance agency.

How do I file a prescription claim if I didn't use my ID card at the pharmacy?

You will need to submit a Prescription Drug Reimbursement form on our website at truescripts.com/members. Please be sure to keep all of your pharmacy receipts for reimbursement.

What do I do if the pharmacy tells me a prescription has been rejected or is not covered?

There are many reasons a prescription may be rejected - such as a problem with eligibility, step therapy requirement, or trying to get a non-covered drug. Ask the pharmacy why the prescription was rejected and contact our Member Care team for assistance.

How do I know if a medication is considered a specialty drug?

A Specialty Drug is a drug that targets and treats specific complex conditions or illnesses such as cancer, rheumatoid arthritis, hepatitis C, and HIV/AIDS. Specialty drugs require patient-specific dosing, careful clinical management, and are typically higher-cost than normal drugs. If you feel your new prescription may be for a specialty drug, please contact our Member Care team for assistance.

Why are there quantity limits on certain medications?

Medications for conditions such as migraines have manufacturer suggested quantity limits due to the therapeutic effect of the medication on your body. Please contact our Member Care team for more details on how quantity limits may impact you.