



# Support for Eldercare

## How We Support You

Caregiving, whether around the corner or across the country, can be challenging. The best way to provide support for our aging loved ones is to explore options and start planning. Don't wait for a family crisis to learn about the complex issues surrounding eldercare. KGA, your Employee Assistance Program, can help you be prepared.

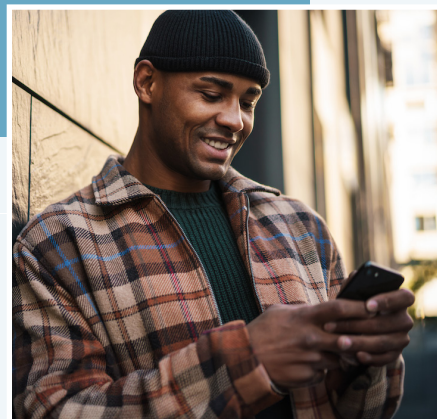
## Service Areas

- Assisted living facilities
- Caregiver support
- Community services
- Home healthcare
- Hospice
- Legal and financial - elder law, estate planning, wills & trusts
- Medicare/Medicaid
- Respite care
- Skilled nursing facilities
- Social Security
- Transportation

## How It Works

For any of these concerns, KGA provides 24-hour access to experienced counselors. This service is completely confidential and provided at no cost to you.

With every counseling referral, KGA will work to connect you with expert resources that meet your personal needs.



## Contact KGA today!

Connect with us online:  
[My.KGALifeServices.com](https://www.my.kgaliveservices.com)



Download our app:  
KGA Mobile



For live support 24/7:  
**800-648-9557**