

# Access Your ID Card Online

**Did you know that you don't need your physical ID card to use your health benefits?**

You can access your Luminare Health ID card anytime, from anywhere (including your doctor's office) via:



**myLuminareHealth.com portal**

**OR**



**myLuminareHealth mobile app**

## Using myLuminareHealth.com Portal

### Step 1:

Go to **myLuminareHealth.com** and log in. If you've never used the portal before, you will have to complete a quick one-time registration process.

**Register**

**Log in here**

**register**

**plan participant**

**broker**

**client/employer**

**provider**

**luminare health**  
Experience. Solutions. Results.

Username

Password

**submit**

Forgot your password?  
Forgot your username?

**create account**

**create account**

**create account**

**create account**

**create account**

Download our app today!

[Registration Guide](#)  
[Transparency in Coverage & No Surprises Act](#)  
[Privacy Statement](#)  
[System requirements](#)

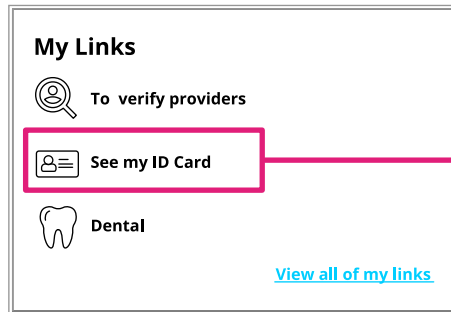
Espanol

# Using myLuminareHealth.com Portal (continued)

## Step 2:

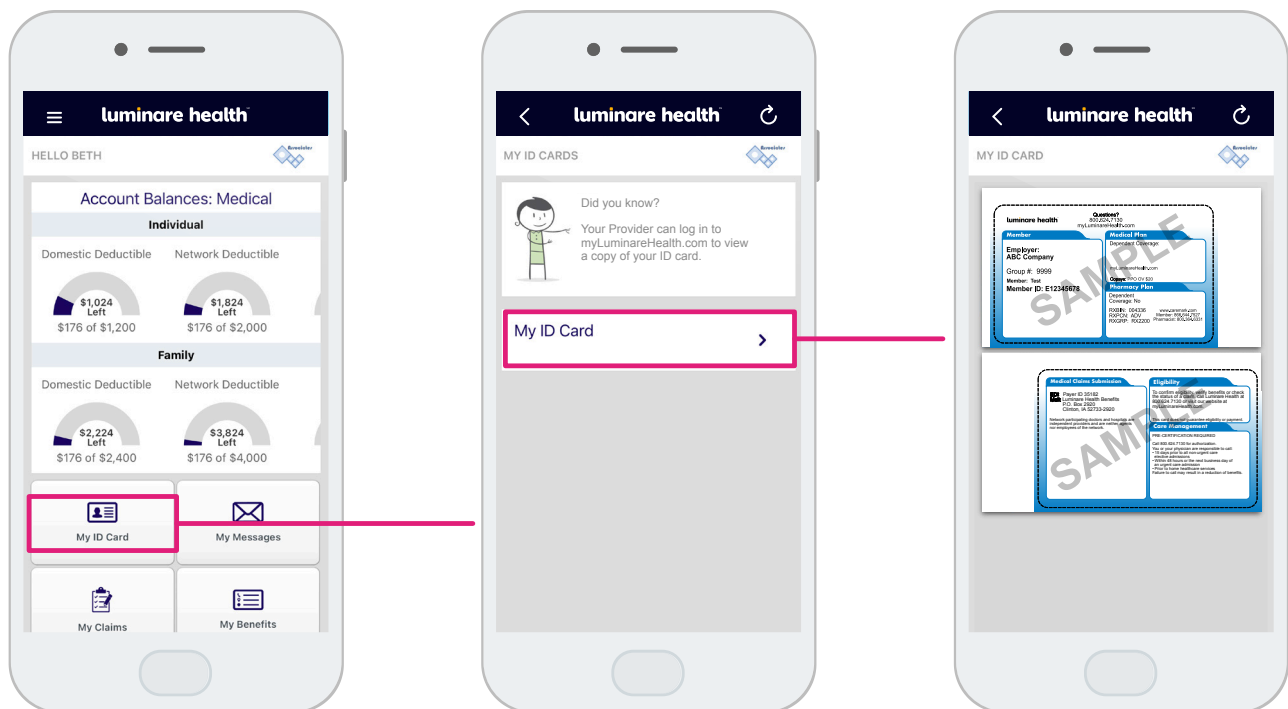
Go to the **My Links** section of your home page. Click the See My ID Card link.

**NOTE:** The links in your **My Links** section and the details on your ID card will vary depending on your specific plan benefits.



## Using myLuminareHealth Mobile App

You can also access your ID card via our mobile app, **myLuminareHealth Mobile**, available for free download from the Apple App Store or Google Play.



If you have any questions, just call the number at the top of your current ID card or send us a message via myLuminareHealth.com.