

# Core vision benefits for ADT members

XP Health makes it easy to care for your vision needs, all while saving time and money. Get 35% off retail on frames!

## THE XP HEALTH DIFFERENCE



### For everyone

Even people with 20/20 vision can use the benefit



### Affordable

35% off retail on 1,500+ frames

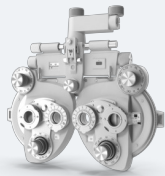


### Convenient

Virtual and home try-on and personalized style recommendations

## EYE EXAMS AND EYEWEAR

### VISION CARE



**\$10 copay**

**Comprehensive annual eye exam<sup>1</sup>**

**Online prescription renewal**

### EYEWEAR

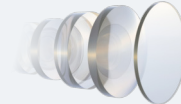
#### Frames



**35% off retail**

**Selection of 1500+ frames**

#### Lenses



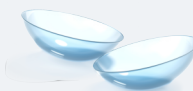
**\$35 copay**

**Doctor-recommended lenses<sup>2</sup>**

LENSES INCLUDE:

· UV protection · Advanced anti-glare protection · Durable polycarbonate material · Dust, smudge, water, and scratch resistance ·

OR



**Contact lenses<sup>3</sup>**



**Questions?** Email us at [concierge@xphealth.co](mailto:concierge@xphealth.co) or chat with us at [xphealth.co](https://xphealth.co)

<sup>1</sup> Your exam is provided by National Vision Administrators with over 99,000 vision care [access points](#).

<sup>2</sup> High-index lenses, progressives/multifocals, light-responsive, polarized sunglasses, and custom tinted lenses have additional costs.

<sup>3</sup> Credit applies to an annual supply. Individual packs are discounted at a prorated amount based off an annual supply.

# Summary of Benefits

Benefit coverage		Member benefit
<b>Benefit period</b> Benefit and coverages renew on this cadence		Exams and materials every <b>calendar year</b>
XP Health vision care platform		
<b>In-office comprehensive vision exams</b> Eye health assessment, refractive tests, and dilation when necessary		<b>In-network: \$10 copay</b> exam at 99,000 vision care access points. Your exam is provided by <a href="#">National Vision Administrators L.L.C.*</a> <b>Out-of network:</b> Up to \$35 reimbursement
Online prescription renewals		<b>\$0 copay</b>
XP Health Marketplace		
<b>Technology-driven convenience and personalization</b> Digital face scan, personalized frame recommendations based on fit and style, and virtual and home try-on		<b>\$0 copay</b>
Prescription frames discount		<b>35% off retail</b> on 1,500+ frames in XP Health marketplace and <a href="#">in-office purchases*</a>
Non-prescription frames discount		<b>35% off retail</b> on 1,500+ frames in XP Health marketplace and for <a href="#">in-office purchases*</a>
Contact lens purchase		<b>\$150 off retail</b>
Lenses		
All eyewear purchases in the XP Health marketplace includes these doctor-recommended lens features: <ul style="list-style-type: none"> <li>• Advanced anti-reflective coating</li> <li>• Advanced blue light protection</li> <li>• Durable polycarbonate material</li> <li>• Dust, smudge, scratch, and water resistant coating</li> </ul> Other add-ons, like light-responsive lenses and others have additional costs that are listed in the platform and subject to change.		<b>\$35 copay</b>
Multifocal		<b>\$125</b>
Additional benefits and discounts		
<b>Refractive surgery</b> Members receive \$1,200 off at preferred providers - LasikPlus, TLC, and The LASIK Vision Institute. All other in-network providers extend 15% off standard prices or 5% off promotional prices. This benefit is provided by National Vision Administrators L.L.C.		